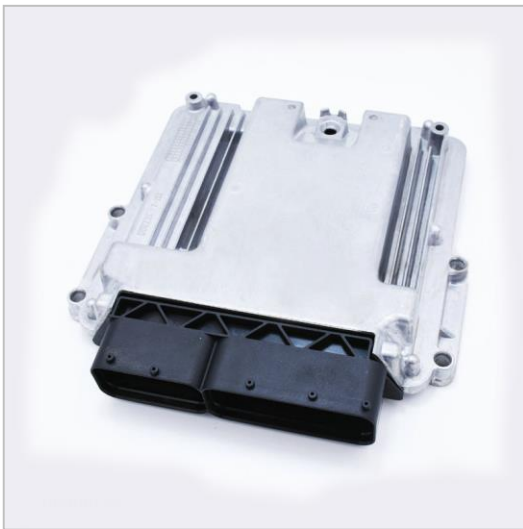


bauma Media dialog . January, 28-29 2019

ENG

CED1200S control unit for safety related applications



The CED1200S is the first component of the new family of control units designed for safety related applications.

With Hardware Category 2, it can be used in applications up to Performance Level D / SIL 2.

It is programmable according to the IEC 61131-3 standard with PHC Studio Integrated Development Environment (CED1200W).

This robust unit is completely sealed and protected against water and dust ingress (IP67/IPx9K).

All the PWM power outputs are available with current closed loop for applications with proportional pressure reducing valves.

The controller is suitable for 12V and 24V applications thanks to the 8 – 32V power supply input range.

There are 24 general purpose inputs (analog, digital, frequency, ...), 2 CAN bus ports and a 5V sensors supply output.

The controller is qualified following the most rigorous international and customers standards.

About Walvoil

Walvoil, part of the Interpump Group, merges also both the experiences and Hydrocontrol and Galtech brands.

Among the main manufacturers of integrated hydraulic products, electronics and complete mechatronics systems, Walvoil designs the future of motion in close touch with its customers and its partners from different sectors and markets.

Present in Italy with seven production sites and a well reknown Test Department, that is the core of all its R&D activities, Walvoil can count also on eight branches in four continents and a capillary sales network allowing the company to be close to its main markets worldwide.

www.walvoil.com . Follow us on [LinkedIn](#)